

INEA

Innovation and Networks Executive Agency

“Financing electro-mobility thanks to H2020”



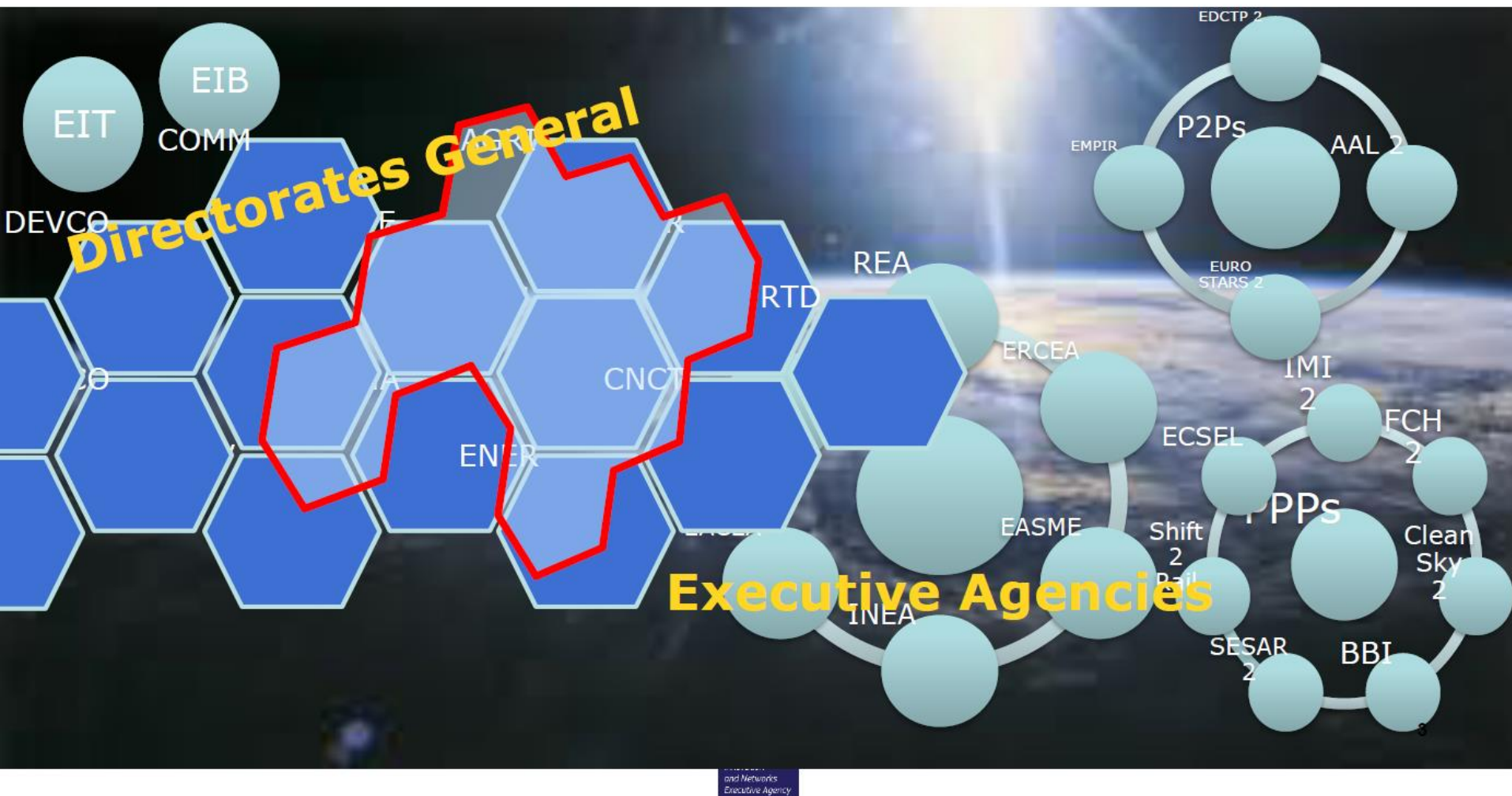
**EMH - On behalf of Dr David Guedj
Senior Project Manager H2020
EU Commission -INEA**

Within the EU, a **directorate-general** is a branch of an administration dedicated to a specific field of expertise.



Agencies have been set up to accomplish specific tasks such as promoting environmental protection, transport safety ... : services, information and know-how to the public.

Implementation of H2020 - Overview



Partnership with the Commission

European Commission

Defines the policy

- Defines strategy, objectives and priority areas/work programmes
- Selects projects for co-financing
- Makes programme decisions
- Evaluates the programme and the Agency's performance

INEA (Executive Agency)

Turns policy into action

- Organises Calls for proposals
- Monitors the technical and financial implementation of projects
- Manages project lifecycle
- Ensures sound financial management

INEA

Executive Agency with **4 Commission Parent DGs**: ENER, MOVE, RTD, CNECT

- **€34 billion**: largest budget of all EAs for 2014-2020
- Solid experience in **programme implementation and project management**
- Rapid expansion from 100 staff in TEN-T EA to around **300 staff** managing around **2000 + projects** by **2020**
- Currently **>220 staff** in a team of **27** EU nationalities

Added value of INEA

- Single access point for programmes
- Full coverage of the R&I life cycle (H2020, CEF)
- Increased services and targeted flow of information
- Improved visibility for EU support

In summary:

- **objectives (work programme) set by the Parent DGs**
- **all implementation activities performed by INEA**

INEA's programmes

- **CEF Transport**
(€22.4 billion)
- **CEF Energy**
(€4.7 billion)
- **CEF Telecom**
(€0.3 billion)



- **H2020 Transport**
(€2.9 billion)
- **H2020 Energy**
(€3.8 billion)

Marco Polo legacy from 2007-2013

*(before managed by EACI –
now EASME)*



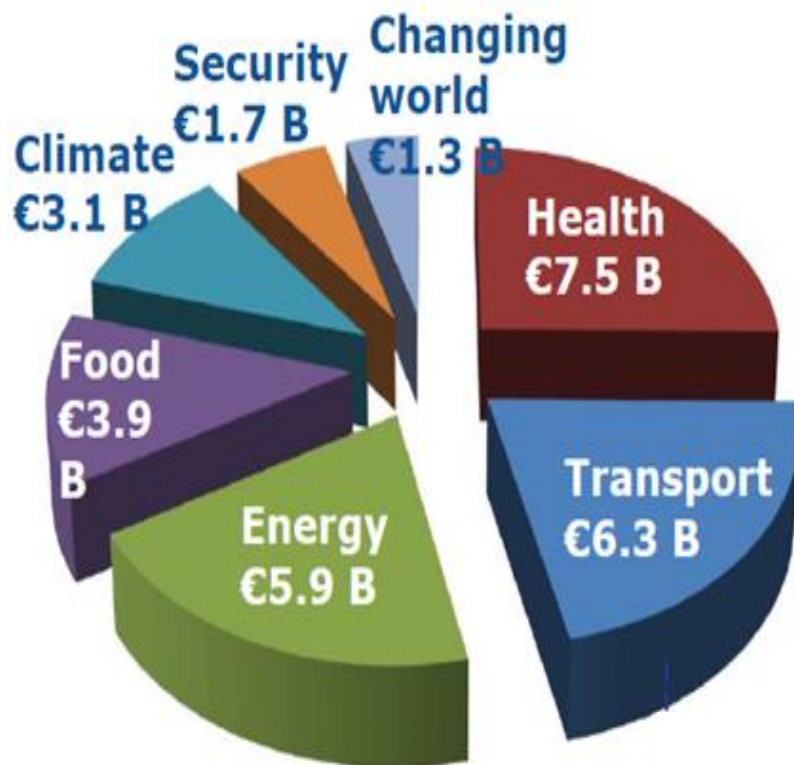
TEN-T legacy from 2007-2013

(Total budget: €34 billion)

H2020: Seven societal challenges

Horizon 2020 reflects the policy priorities of the Europe 2020 strategy and addresses major concerns shared by citizens in Europe and elsewhere.

A challenge-based approach will bring together resources and knowledge across different fields, technologies and disciplines, including social sciences and the humanities. This will cover activities from research to market with a new focus on innovation-related activities, such as piloting, demonstration, test-beds, and support for public procurement and market uptake.



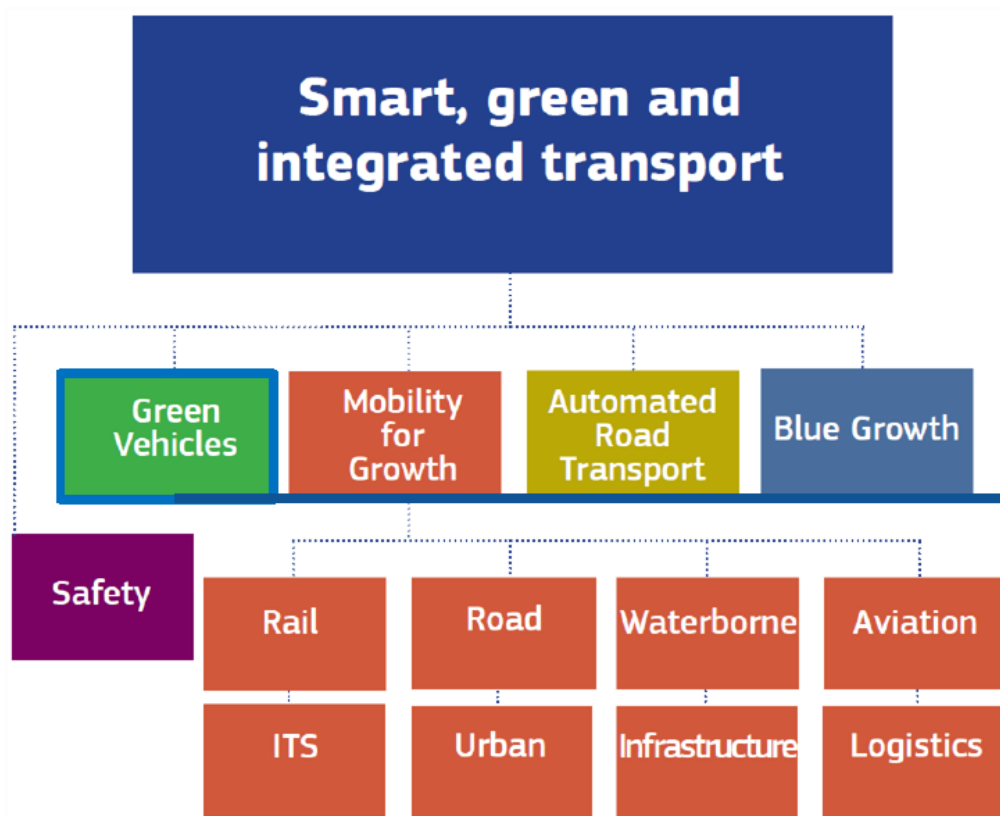
Share in H2020:

- **Health** - 9.7%
- **Transport** - 8.2%
- **Energy** - 7.7%
- **Food** - 5%
- **Climate** - 4%
- **Security** - 2.2%
- **Changing world** - 1.7%

Smart, green and integrated transport

- **Total budget € 6.3 billion**
- **INEA budget € 2.9 billion**
- **137 on-going projects**
- **circa 400 projects by 2020**

Transport Societal Challenge

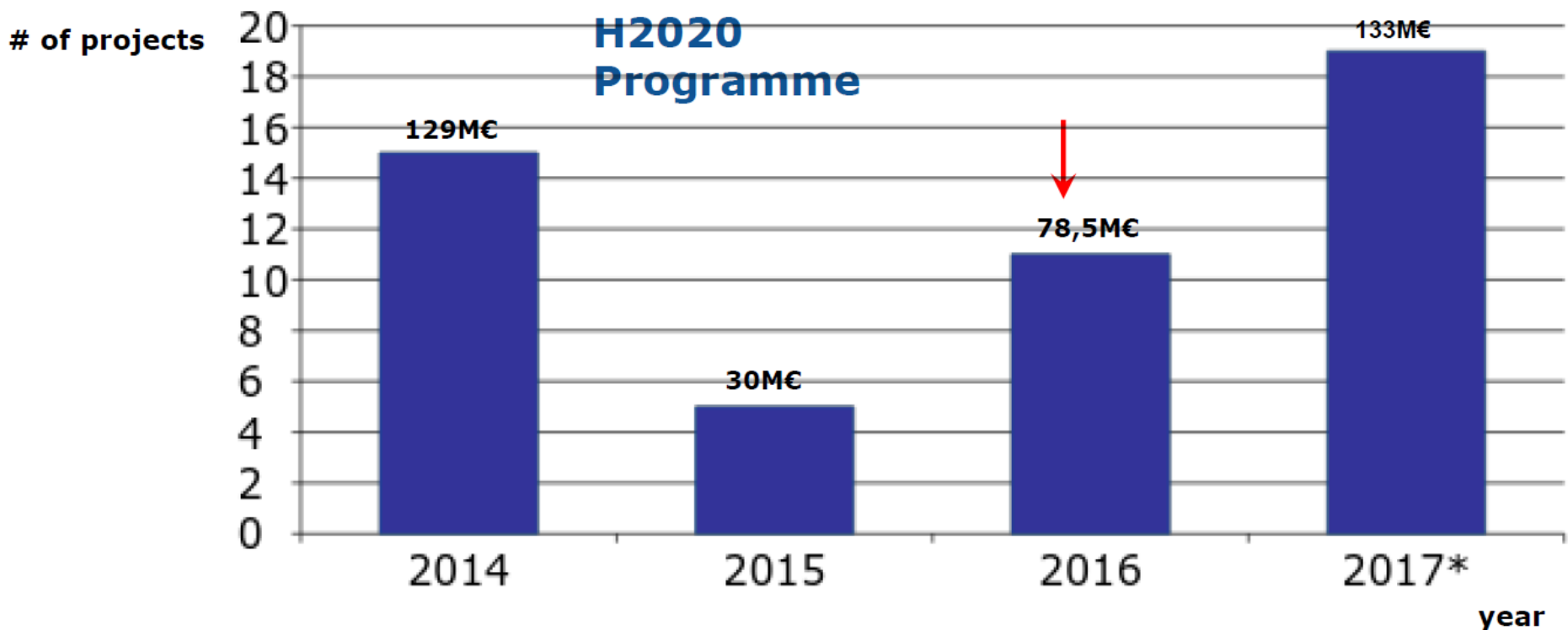


Topics & Scope

- Batteries & Battery Management Systems
- Electric Vehicles
- Hybrid Vehicles
- Internal Combustion Engines
- Urban freight logistics
- Architectures
- Concepts

INEA's contribution to Green Vehicle research in H2020

Implementing a budget of 370 million € - 31 projects running
Currently funding **of 284 unique beneficiaries**



* Prediction based on available funding

CALL 'GREEN VEHICLES'

- The call is complementary to
 - Mobility for Growth 3. Road (MG.3.1-2014. Technologies for low emission powertrains)
 - 'Smart Cities and Communities',
 - 'Fuel Cells and Hydrogen 2' joint undertakings
 - "Nanotechnologies, Advanced Materials and Advanced Manufacturing and Processing (LEIT-NMP 17 – 2014): topic on post lithium ion batteries for electric automotive applications
- Topics from GV call
 - GV.1-2014. Next generation of competitive lithium ion batteries to meet customer expectations
 - **GV.2-2014. Optimised and systematic energy management in electric vehicles**
 - GV.3-2014. Future natural gas powertrains and components for cars and vans
 - GV.4-2014. Hybrid light and heavy duty vehicles
 - GV.5-2014. Electric two-wheelers and new light vehicle concepts
 - GV.6-2015. Powertrain control for heavy-duty vehicles with optimised emissions
 - GV.7-2014. Future natural gas powertrains and components for heavy duty vehicles
 - GV.8-2015. Electric vehicles' enhanced performance and integration into the transport system and the grid

POTENTIAL CLUSTERING of PROJECTS FROM GREEN VEHICLE CALL

JOSPEL

Low energy climate system in electrical vehicles, reducing battery consumption through Peltier effect

OPTEMUS

Development of core&complementary technologies to increase comfort+driving range

XERIC

Energy friendly climate control system to reduce by 50% the energy used for passenger comfort

OSEM-EV

thermal management solutions for new generation of EV

GV.2-2014. Optimised energy management in electric vehicles

GV.1-2014. Competitive lithium ion batteries

SPICY

New generation of Li-ion batteries

E-CAIMAN

European high performance battery for the global market

FIVEVB

New cell technology based on innovative materials

For more information



inea@ec.europa.eu



<http://inea.ec.europa.eu>



@inea_eu



Look for INEA!

Thank you!

Contact:
David.Guedj@ec.europa.eu